

ARC XT informations

ARC XT is THE preferred and best selling programming software for the Uniden XT series, ARC-XT-PRO adds powerful data logging, digital audio recording and a fantastic bandscope!

- *ARC-XT supports the following scanner models: BCD396XT , BC346XT , BCD996XT and **BCT15X**.*
- *ARC-XT includes the most versatile and most feature rich editor available on the market.*
- *ARC-XT combines the best of 2 worlds! With ARC-XT you can directly access (*) the RadioReference.com Database and import over 9000(!) trunk and conventional systems directly into your scanner!*
- *QuickKey Overview: 'Drag and Drop' your systems/sites or groups in QuickKeys.*
- *Built in lookup utility to find Latitude & Longitude based on US address or zipcode*
- *ARC XT can import ARC246/ARC996/ARC396/ARC15 system files.*
- *ARC-XT is fully compatible with the new Radioreference SOAP webservice.*
- *Built in decimal <> hexadecimal converter*
- *Bandplan Editor: change the default step and mode settings per band.*
- *Handy tools menu*
- *Copy/paste groups between systems, building new systems was never this easy!*
- *Read data directly from the RadioReference Database, 'browse' for local trunk systems and let ARC-XT do the programming!*
- *'intelli upload': Replaces systems that are stored in your scanner without having to reset your scanner first! ARC-XT will never reset your scanner!*
- *ARC-XT-PRO also includes full PC Virtual Control and a very enhanced recorder with 'no loss' digital recording technology and data logging.*
- *ARC-XT-PRO Intelligent Data Storage recorder: wav files are automatically stored in folders based on system/group/date/time.*
- *ARC-XT-PRO wav files are stored per frequency or talkgroup for easy playback.*
- *ARC-XT-PRO includes a fantastic bandscope option.*
- *ARC-XT-PRO now includes a Tone Out frequency logger!*
- *Don't have a serial port? ARC-XT also works with the Uniden USB-1 cable.*
- *ARC-XT supports the following Uniden scanner models: BC346XT, BCD396XT, BCD996XT and the BCT15X. IMPORTANT: ARC-XT DOES NOT work with the BCD996T / BCT15 / BC246T models !*
- *IMPORTANT NOTICE FOR VISTA/WIN7 USERS: If you use the Uniden USB cable you must install the USB driver else the software may not communicate with your scanner!*
- *Windows XP/2000/Vista/Windows 7, minimum 1024x800 video, 512 RAM, free serial or USB port*

Comparatif entre les versions Basic & Pro de ARC-XT

La version Basic est celle fournie par CB+ lors de l'achat du récepteur **Uniden BCT-15X**.

La version Pro est commercialisée indépendamment.

Option	ARC-XT-Basic	ARC-XT-Pro
Multi scanner support	Yes	Yes
Enhanced Editor for conv./trunk channels	Yes	Yes
Import ARC246/396/996 files	Yes	Yes
Bandplan Editor	Yes	Yes
Multi Trunk site programming	Yes	Yes
Virtual Control	No	Yes
RadioRef 'SOAP' Import	Yes	Yes
GPS US address lookup utility	Yes	Yes
Enhanced Virtual Control	No	Yes
Data logging/history	No	Yes
Bandscope	No	Yes
Waterfall Display	No	Yes
'no loss' Harddisk Audio Recording	No	Yes
Closecall/Subtone logging	No	Yes

Screenshots

The screenshot shows the XT ARC-XT software interface. The main window title is "XT ARC-XT" and the active system is "Atlanta GA". The interface includes a menu bar (File, Edit, Options, Setup, QuickKeys, Internet, Scanner, Tools, Help) and a toolbar with various icons for file operations and system management.

The "Browser" pane on the left shows a tree view of systems and sites. The "Atlanta GA" system is expanded, showing several sites: Atlanta Public S, Atlanta Fire (selected), AtlantaPoliceFie, AtlantaPoliceSpe, CollegeParkCityo, EastPointCityof, and State of Georgia. Below the tree view are buttons for "Add: System", "Site", and "Group".

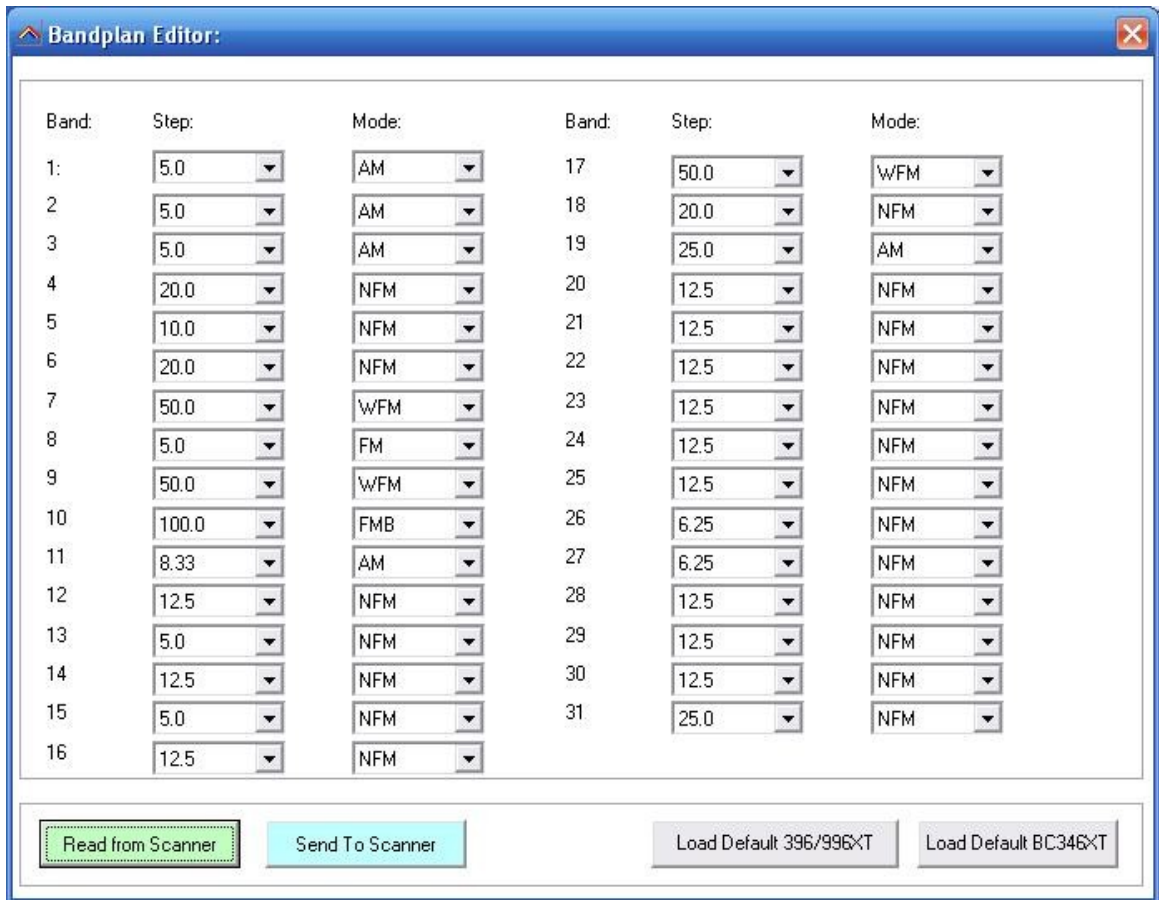
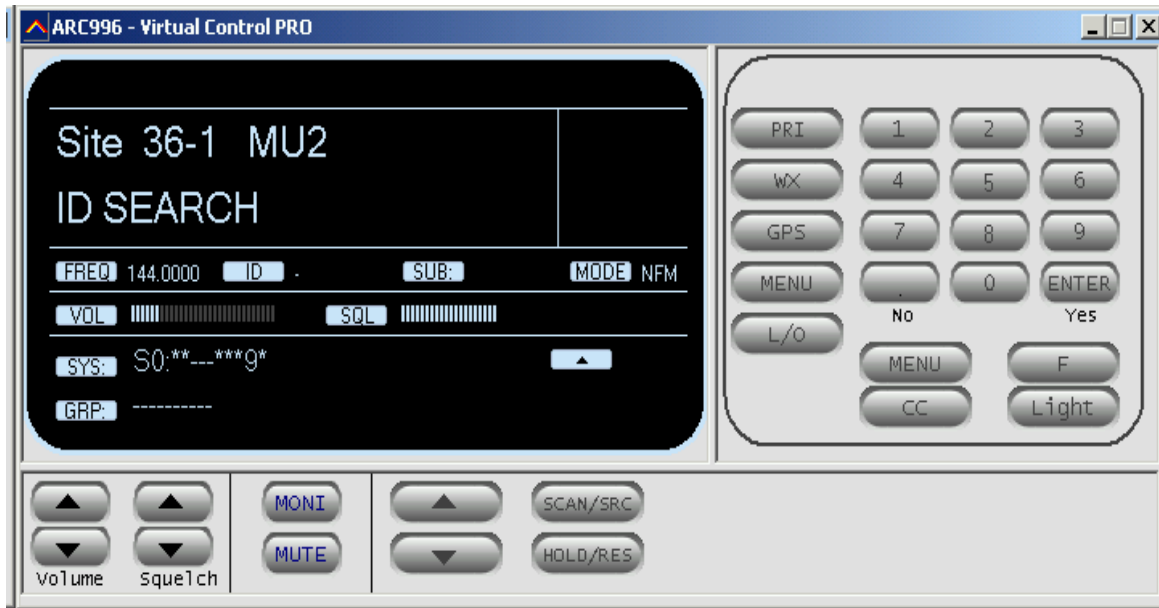
The main area displays a table of talkgroups for the "Atlanta Fire" group. The table has the following columns: #, Talkgroup, Alpha Tag, LockOut, Priority, Alert Light, Alert Pattern, Alert Tone, and Alert Level. The data is as follows:

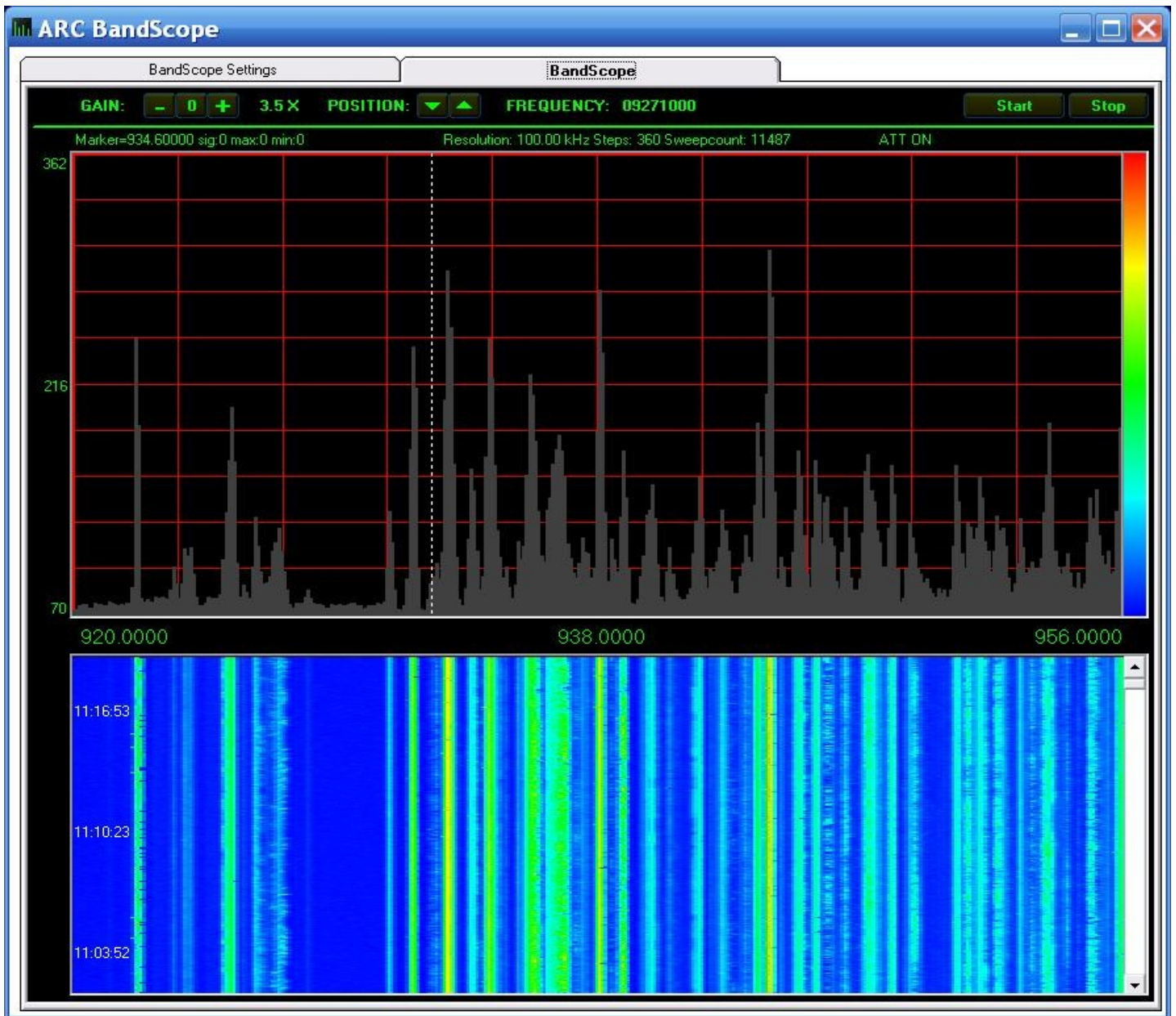
#	Talkgroup	Alpha Tag	LockOut	Priority	Alert Light	Alert Pattern	Alert Tone	Alert Level
1	34672	AFD Dispatch	Off	Off		On	Off	Auto
2	34960	AFD MED 1	Off	Off		On	Off	Auto
3								
4								
5								
6								
7								
8								
9								
10								

The screenshot shows the "GPS Location Data Editor" dialog box. It has two tabs: "Find Latitude/Longitude" (selected) and "Home". The dialog contains the following fields and controls:

- Street:
- City:
- State:
- Latitude:
- Longitude:
- Zipcode:

Below the fields are several buttons: "Find GPS data" (highlighted with a green border), "Accept", "Set As Home", "Show Map", and "Clear". At the bottom right are "Cancel" and "Ok" buttons.





www.radioreference.com - WebService Trunk Systems

Username: Password:

State:

County:

System:

Sites / Groups | Talkgroups | Alpha Tags Options

Sites:	Callsign:	Groups:	# TGid's:
<input type="checkbox"/> Local	WPBB354	<input type="checkbox"/> Alameda City of	18
<input type="checkbox"/> Wide	WPBB354	<input type="checkbox"/> American Medical Response AMR	11
		<input type="checkbox"/> C MED	15
		<input type="checkbox"/> County Probation	10
		<input type="checkbox"/> Dublin San Ramon Services District	11
		<input type="checkbox"/> Emergency Broadcast	7
		<input type="checkbox"/> Fire EMS	27
		<input type="checkbox"/> Fremont City of	33
		<input type="checkbox"/> General Services	16
		<input type="checkbox"/> Hayward City of Police NARC	7
		<input type="checkbox"/> Medic to Hospital	14
		<input type="checkbox"/> Mutual Aid	18
		<input type="checkbox"/> Newark City of	7

Select All UnSelect All Select All UnSelect All 0 / 265

Import Primary Control Channels
 Import Alternate Control Channels
 Import All Control Channels

Bank Name:

Don't change
 Use System Name
 Custom:

Done